

# US1 Touch Panel



**D1** dewhurst

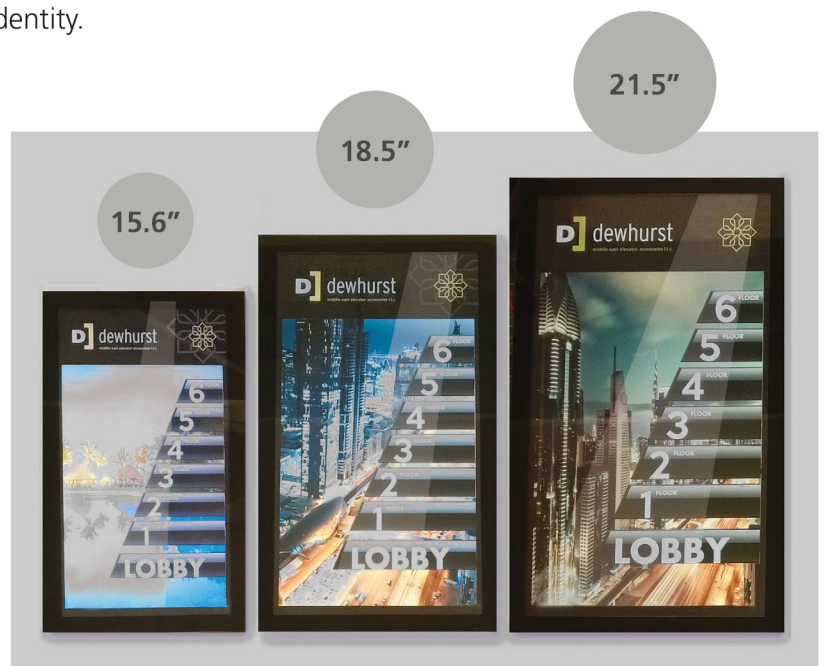


1	2	3	P
4	5	6	M
7	8	9	G
★L	0	B	♿

# US1 Touch Panel

The US1 touch panel, alongside our industry-leading digital design service, offers a modern and differentiated signalisation package for any lift. It is a smart, futuristic alternative to traditional pushbuttons, allowing you creative freedom for the design of the touch screen and buttons to enhance your corporate brand identity.

The whole unit is neatly self-contained in its housing and is less than 35mm in depth. Part of the package is an exclusive programming tool that allows our customers to independently update content such as text, images and video. We offer a design service to help you create and own your personalised designs of the US1.



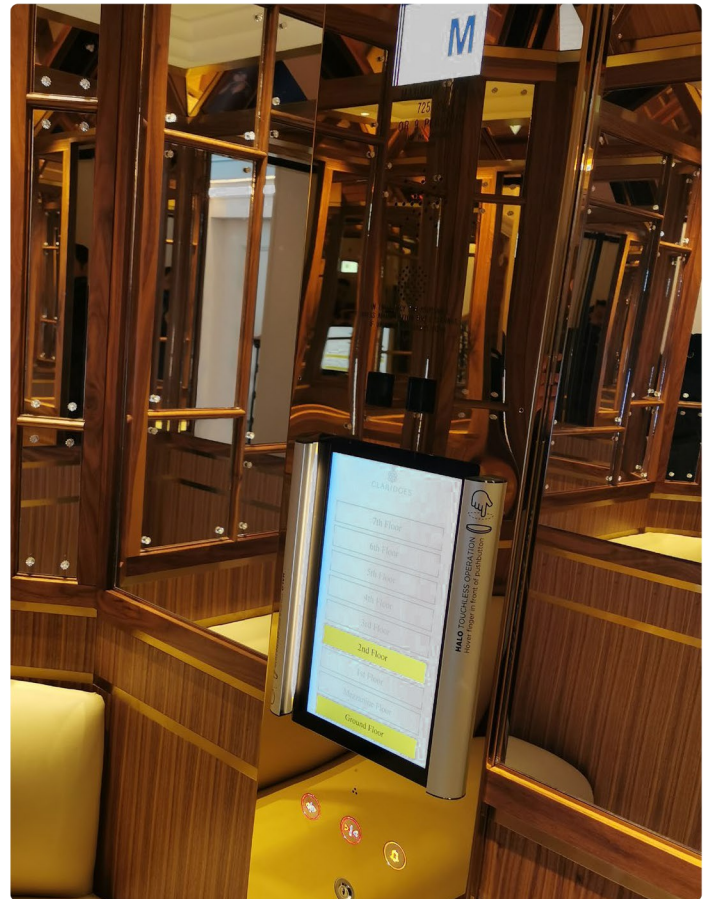
In order to suit most lifts, the US1 touch panel is available in three sizes.

## Key features

- Fully sealed glass panel – perfectly smooth and easily cleaned with any glass cleaner or rubbing alcohol.
- No moving parts, impervious to dust or vibrations.
- Drift-free touch screen technology – doesn't require calibrations or re-setting.
- Option to place calls using touch screen.
- Bespoke button designs that come in all shapes and sizes.
- Pin-code floor lockout.
- Multi-lingual text.
- Displays HD videos, news, weather and company information with customized graphics, multiple layouts and scheduling.
- Interface to any controller – serial or discreet.
- Energy saving power save mode available.
- Speech synthesizer.

## Multimedia touchless displays at Claridge's

 Central London



Dewhurst and Schindler were approached by the Maybourne Hotel Group to supply a range of bespoke fixtures for Claridge's Hotel redevelopment. The client wanted a touchless signalisation package for the lift car and landings, which was compatible with the Schindler 5500 range of controllers.

Dewhurst recommended the US1 touch car operating panel (COP) for the project. Integrating this with the Halo car operating system provided a touchless solution inside the lift.

For the Landing operating panels (LOP), 'Wave to Call' landing units were supplied. These improve user experience and reduce touchpoints in the building by allowing the lift to be called without the touch of a button.

For the Landing indicator panel (LIP) Dewhurst supplied large hall lanterns for all lifts, as well as a sweep indicator for the lift at the front of the hotel to create a vintage look and feel and compliment the lobby area.

Working with the Schindler team in the UK, Dewhurst made sure that all the components were plug and play. The COPs, LOPs and LIPs were all pre-wired for easy on-site installation.

**Bespoke design**



**Touchless solution**



**Pre-wired fixtures**



## Prestigious US1 touch panel installation at Treasury Brisbane

 Brisbane, Australia

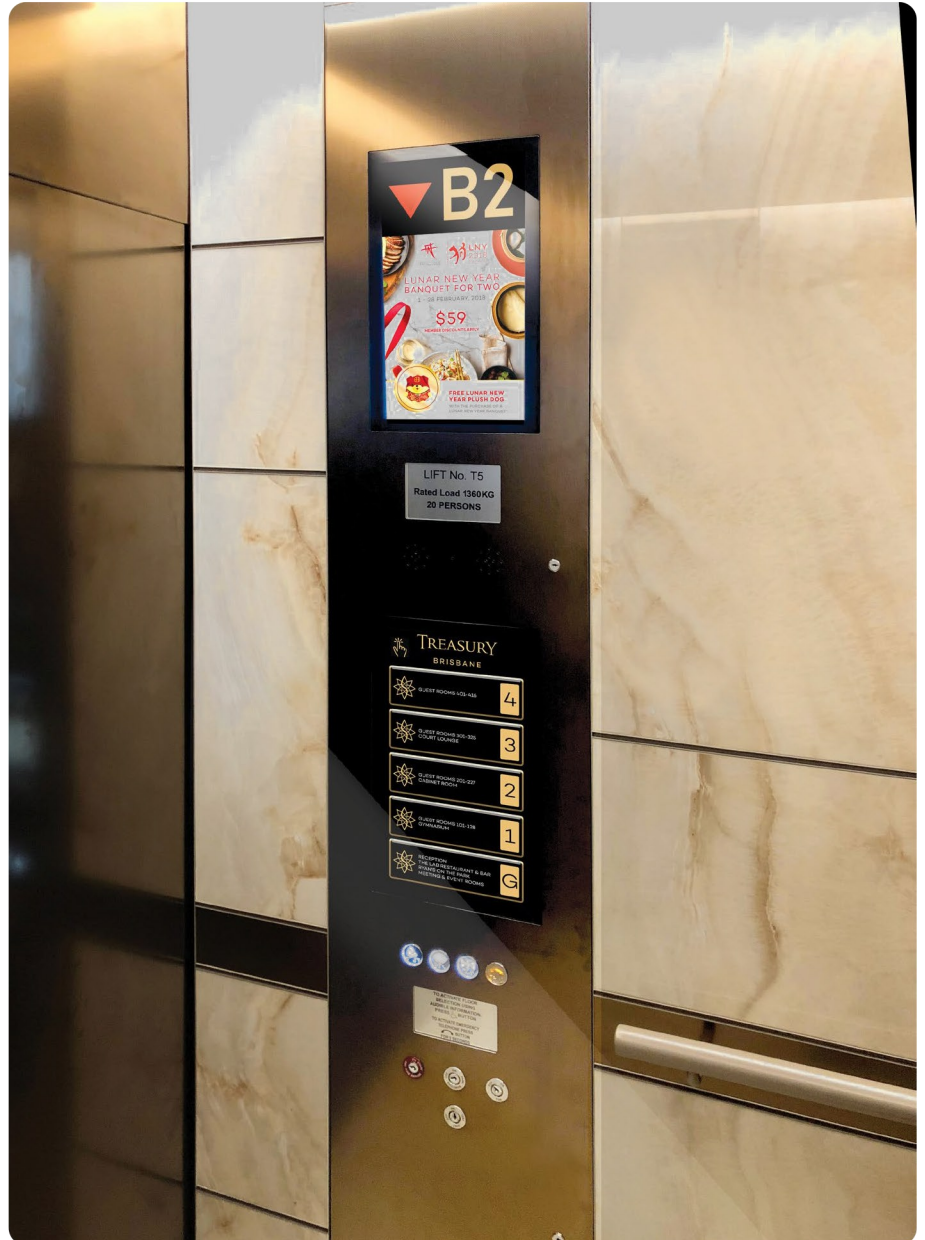


Dewhurst worked alongside Schindler Australia to deliver a prestigious and innovative signalisation package.

The customer was looking for a high end, prestigious lift installation with state of the art technology and premium design. The US1 touchscreen, with PCAP technology and customisable HD graphics, delivered these requirements.

The total installation of 40 US1 touchscreens received overwhelmingly positive feedback. The fit and finish alongside the simplicity of the installation was praised and the software package has been highlighted by internal staff as being extremely user-friendly.

The installations have proved incredibly reliable despite the high traffic loads and estimated 5 million user interactions per year.



Bespoke design



Reliable



Simple installation

The features and flexibility of the US1 touch panel make it perfect for use in lifts across multiple industry environments, including hotels, residential buildings, hospitals, airports, offices and shopping centres. The design of the screen can be adapted to display specific relevant information, as well being brand compliant.

The US1 touch panel can also be put into fire service mode. This includes features such as displaying floor maps to aid emergency responders in navigating the building.

## Hotels & residential buildings

Screen graphics can be changed as needed to share information or promote special events, which is particularly useful in buildings with a lot of residents or guests. The screens can be updated and scheduled from anywhere with an internet connection.





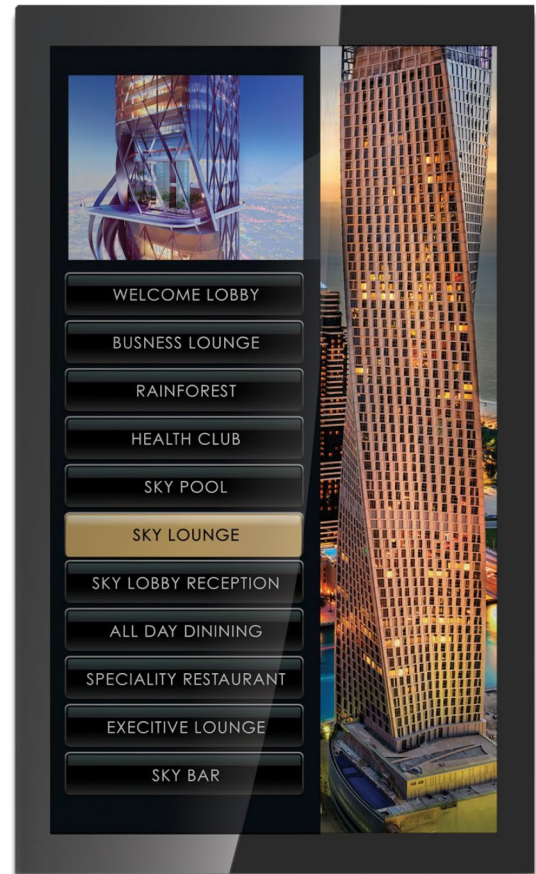
## Key features

- Hotel branding or the architectural renderings of the building can be incorporated into theme graphics.
- Screens can provide relevant information to tenants such as time, weather, restaurant menus or building events.
- On-site amenities, such as pool or gym, can be promoted from within the elevator.



## Corporate & commercial buildings

US1 touch panels can incorporate design elements from the property with corporate branding. This works well in maintaining a consistent, professional look and feel for businesses and within corporate environments.



### Key features

- Floor names and descriptions provide visitors assurance that they are heading to the correct floor.
- Screens can display event information or advertisements, which can be updated and scheduled from anywhere with an internet connection.
- Bespoke design that suits the corporate identity of any business.

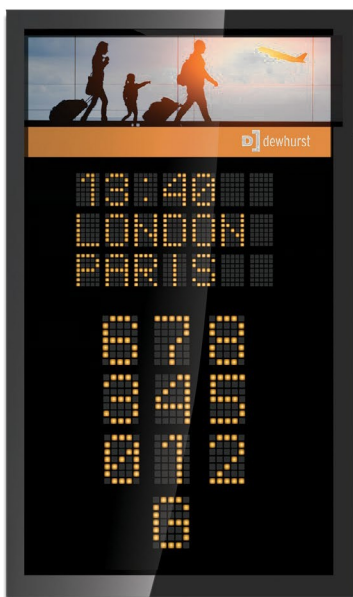


# Hospitals

The US1 touch panel can be designed to include large touch areas, making it clear and easy to read. The screen can display floor maps to make it easy to navigate large buildings such as hospitals.

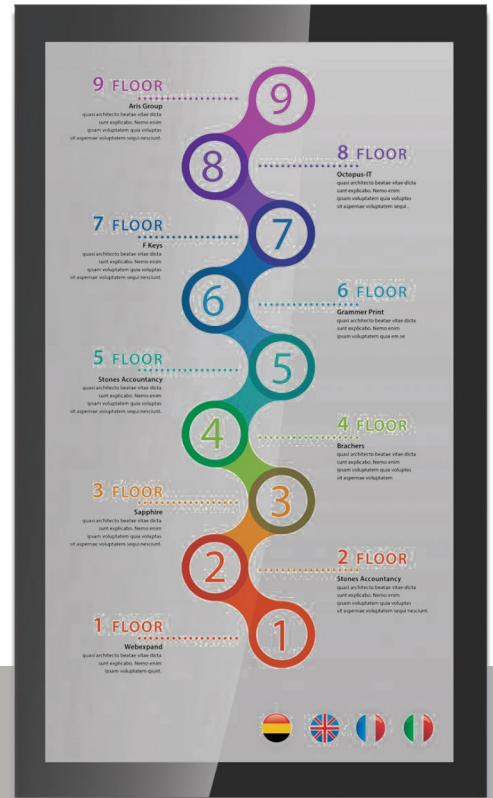
## Key features

- Easy to clean - isn't affected by disinfectant sprays.
- The screen can be put into 'code blue' medical emergency mode, where the layout is simplified and instructions can be added onto the display.
- The touchscreen can incorporate interactive maps of the facility.



# Airports

Screen graphics, icons, colors and typography can match those used on signage and throughout other areas of the building to create a seamless visitor experience, which is ideal in fast-paced environments such as airports.

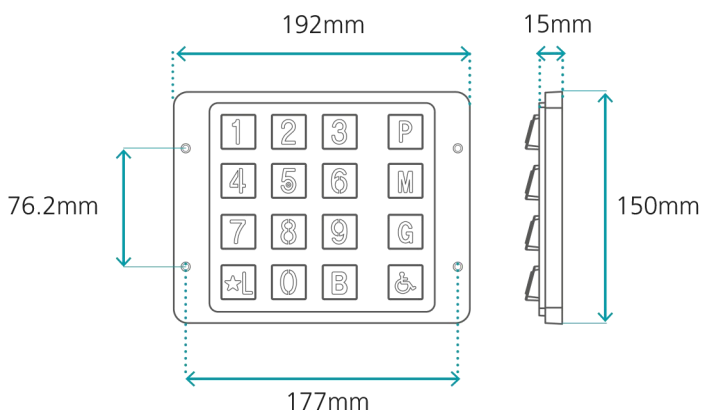


## Key features

- Multiple language selections can be programmed.
- Interactive maps can be included on the selection screen to help visitors to navigate the building once they exit the elevator.
- Twitter and RSS feeds can be linked to show live airport updates.
- On-site businesses and services can be promoted and advertised on the US1 touch screen.

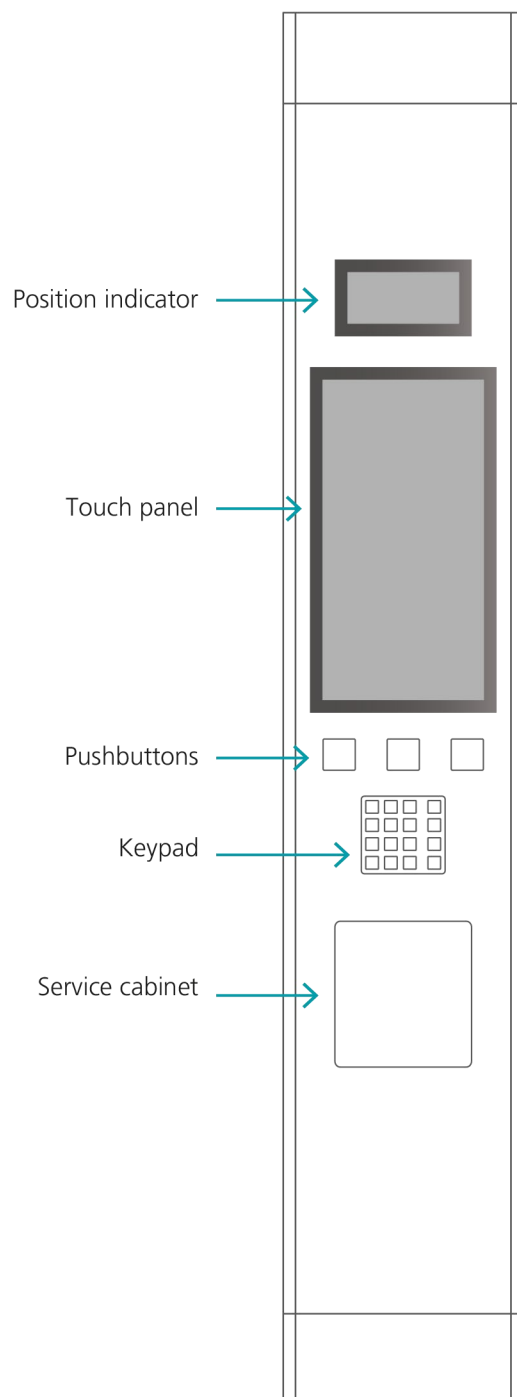
## Code compliance

To comply with code and deliver a solution to the handicap access requirements, our En-pad keypad is designed to sit underneath the US1 touch panel as an alternate method for passengers to key in their desired floor.



Our En-Pad keypad is designed in a 4 x 4 matrix and has numerous options available and bespoke designs for the non-numeric keys in order to match your needs.

We recommend that the standard "Door Open", "Door Close" and "Alarm" functions should remain as conventional pushbuttons positioned below the touch panel for safety reasons.



# Specifications

<b>Operating temperature range</b>	Touchscreen and CPU: 0 C to 50 C (operating), -20 C to 60 C (storage) Keypad and Elevator Interface Unit: -20 C to 60 C
<b>Standards conformance (system)</b>	Elevator and Escalator Electrical Equipment Conforms to ASME A17.5-201
<b>Standards conformance (keypad)</b>	CSA B44-07 Appendix E (and older editions -00 and -04) ASME A17.1-2007 Appendix E (and older editions 2000 and 2004) ANSI A117.1-2003 and 1998 (and proposed 2008 standard) ADA Standards for Accessible Design, 2010 edition
<b>Fail-safe operation</b>	In a system with two touchscreens, in the event of failure of one touchscreen, the other touchscreen remains operational.  In a system with keypads, in the event of a failure of the touchscreen(s) or CPU, the keypad remains operational. Power is required for the keypad to operate and it is recommended that the system be supplied by an uninterrupted source of emergency power.  In systems with conventional elevator buttons, in the event of a failure of the touchscreen(s) or CPU, the elevator may still be operated by conventional elevator buttons.
<b>Emergency recall/fire service</b>	The touchscreen system does not affect the ability of the elevator to respond to emergency recall or fire service requests.
<b>Fire Retardation</b>	The touchscreen meets UL standard 94HB.
<b>Vandalism/breakage resistance</b>	Touchscreens are constructed from tempered glass with a safe break pattern. They contain no overlays or coatings to wear out, scratch, or tear.
<b>Electrostatic Protection</b>	The touchscreen meets Level 4 (15 kV air/8 kV contact discharges) per EN 61 000-4-2, 1995.
<b>Chemical resistance</b>	The active area of the touchscreen is resistant to all chemicals that do not affect glass, such as acetone, toluene, methyl ethyl ketone, isopropyl alcohol, methyl alcohol, ethyl acetate, ammonia-based glass cleaners, gasoline, kerosene, and vinegar.

[www.dewhurst.co.uk](http://www.dewhurst.co.uk)  
[displays@dewhurst-global.com](mailto:displays@dewhurst-global.com)



We operate a policy of continuous product development and reserve the right to change or improve specification without prior notice. E & OE.

All information within this document is for guidance only and does not form the basis for contract. The product images and diagrams shown are for illustration purposes only and may not be an exact representation of the latest version of the product. ©2023 Dewhurst. All Rights Reserved.

Please consider the environment before you print this document.

