

Auxiliary Switch - 5 Amp Max Type VF20

Publication Number: LS012/1211

Application

This switch is for incorporation in pilot interlocking and safety circuits of control equipment. It can be operated by any suitable means, e.g. ramp, arm, door etc.

Operation

Depressing the plunger operates the switch mechanism. Double-airbreak switching is employed, with alternative normally-open or normally-closed circuits.

Installation

See over.

Construction

Fixed contacts and terminals are mounted on a moulded plastic base; moving contacts are carried on a moulded plastic bush mounted on the plunger. All contacts are silver-faced. It is supplied in a die-cast case.

VF20 is also available fitted with reversible operating lever on a mounting plate.

Contact Rating

See over.

Operating Force

0.52kg.

Weight

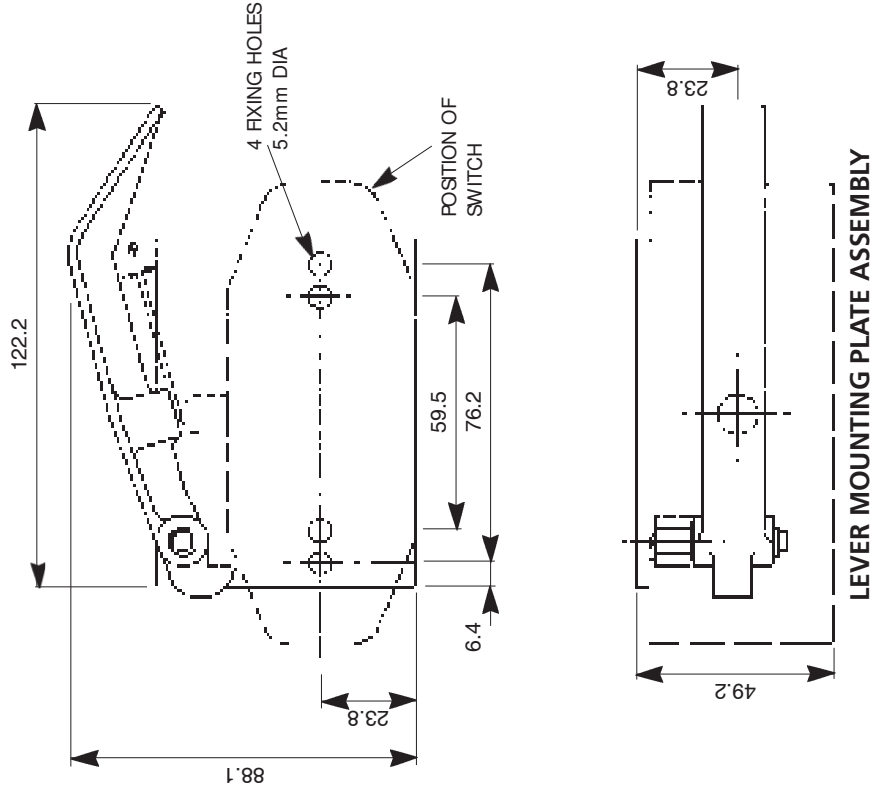
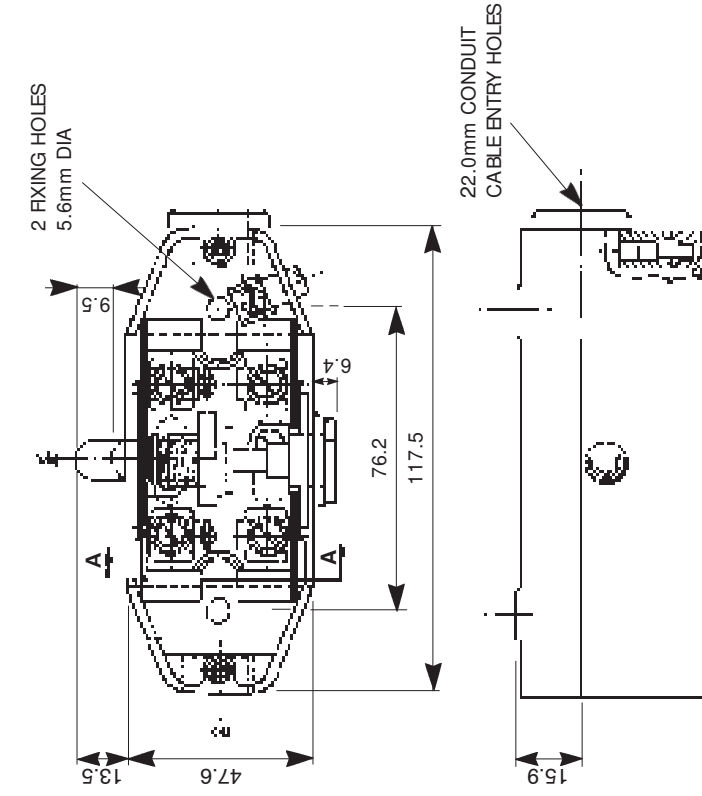
0.45kg.

Operating lever and mounting plate: 0.26kg.

Competitive Features

Positive break (safety contact)
Wide range of applications
Long, trouble-free life
Silver-to-silver contacts

1. Operating sequence
When the plunger is actuated the moving contacts 'break' immediately & travel 6.3mm before making with opposite pair. From this point the plunger travels a further 3.2mm (follow-through) to maximum travel position
2. A minimum pressure of 0.9kg is necessary to fully actuate the operating sequence
3. 200 Watt maximum, 240 volt maximum, 2 amps noninductive maximum, 1 amp maximum inductive.
a.c. 12kVA maximum, 440 volts RMS maximum, 5 amps maximum.



Unit may be 'handed' by assembling items on opposite face of plate.

* When positioning switch on plate, allow 0.8mm nominal clearance at this point with lever stop in contact with switch.

ASSEMBLY OF STANDARD TYPE AUXILIARY SWITCH (IN DIE CAST BOX)